



MIAMI SAILING WEEK
PRESENTED BY EFG BANK



Coral Reef Yacht Club
2484 South Bayshore Drive
Miami, Florida
March 6-12, 2011

STAR CLASS SAILING INSTRUCTIONS

1. RULES

- 1.1 The regatta will be governed by the rules as defined in The Racing Rules of Sailing.
- 1.2 Prescriptions of US SAILING which apply are: Rules 61.4 or 76.3, Appendix F or prescriptions to rules 40, 68, 70.5(a) or 76.1. These prescriptions are attached as Appendix II. Other US SAILING prescriptions do not apply. The US Sailing prescriptions to rule 60, 63.2 and 63.4 are deleted.
- 1.3 The regatta is open to Star Class boats which are in compliance with ISCYRA 21 and 26.
- 1.4 ISCYRA 31.1.3 is changed to a combined weight of 475 pounds for skipper and crew. Skippers and crews finishing 1st through 5th overall will be weighed after the last day of racing.
- 1.5 National letters and sail numbers shall be those entered on the entry form with no substitutions allowed. Bow identification numbers will be provided by the organizing authority and placed on both sides of the bow according to instructions issued with the bow numbers. Boats will be identified by bow numbers.
- 1.6 Where there is a conflict between the notice of race and the sailing instructions the sailing instructions (SI) will govern.

2. NOTICES TO COMPETITORS

Notices to competitors will be posted on the official notice board located in the outside corridor behind the Coral Reef snack bar.

3. CHANGES TO THE SAILING INSTRUCTIONS

Any change to the sailing instructions will be posted before 0900 on the day it will take effect, except that any change to the schedule of races will be posted by 2000 on the day before it will take effect.

4. SIGNALS MADE ASHORE

- 4.1 Signals made ashore will be displayed on the Coral Reef Yacht Club flagpole.
- 4.2 When flag AP is displayed ashore, '1 minute' is replaced with 'not less than 90 minutes'. This changes Race Signals AP.



MIAMI SAILING WEEK

PRESENTED BY EFG BANK



5. SCHEDULE OF RACES

5.1 Date	Day	Warning Signal
3/7	Monday	11:55
3/8	Tuesday	11:55
3/9	Wednesday	11:55
3/10	Thursday	11:55
3/11	Friday	11:55
3/12	Saturday	10:55

5.2 There will be one race per day, unless otherwise changed in accordance with SI 3.

5.3 The scheduled time of the warning signal for the first race each day is 11:55 from Monday to Friday and 10:55 on Saturday.

5.4 After a long postponement, to alert boats that a race sequence will begin soon, flag L will be displayed with one sound for at least four minutes before a warning signal. Flag L will be lowered 1 minute before the first warning signal with multiple sound signals. This changes Race Signal L.

5.5 On Saturday 3/12/11, no warning signal will be made after 1300.

5.6 There are no haul out or berthing restrictions.

6. CLASS FLAG

The class flag will be a red star on a white background.

7. RACING AREA

A chart of the racing area on Biscayne Bay will be attached as ADDENDUM I.

8. THE COURSES

8.1 The race courses will be as described in ISCYRA 34.3, as modified by these sailing instructions and any subsequent changes to the sailing instructions.

8.2 No later than the warning signal, the race committee signal boat will display the course number with the distance and magnetic bearing to the first mark.

8.3. Courses will not be shortened. This changes rule 32.2.

8.4 The length of the legs may be changed.

9. MARKS

9.1 Inflatable marks will be used for the course.

9.2 A gate may be employed at mark 3. Boats shall sail between the gate marks and round either mark.

10. THE START

10.1 Races will be started by using rule 26 with the warning signal made 5 minutes before the starting signal.



MIAMI SAILING WEEK
PRESENTED BY EFG BANK



10.2 The starting line will be between a staff displaying an orange flag on the starboard end signal boat and a staff displaying an orange flag on the port end pin boat.

10.3 If a midline boat is present, the starting line will be from the staff with an orange flag on the starboard end signal boat, to the staff with an orange flag on the midline boat, to the staff with an orange flag on the port end pin boat.

10.4 A boat starting later than 10 minutes after her starting signal will be scored Did Not Start without a hearing. This changes rules A4.2 and A5.

10.5 Rule 29.1 Individual Recall is changed. 'Four minutes' is replaced by '10 minutes'.

10.6 Rule 30.1 I Flag Rule shall not be employed.

10.7 Rule 30.2 Z Flag Rule add, "If a general recall is signaled or the race is abandoned after the starting signal, the race committee will display the sail number(s) of boats breaking this rule and receiving a scoring penalty before the warning signal of the next race".

10.8 Rule 30.3 Black Flag Rule add, "As a courtesy only, the race committee will attempt to display between mark 1 and mark 2 the bow number(s) of yachts breaking this rule".

11. CHANGE OF THE NEXT LEG OF THE COURSE

To change the next leg of the course, the race committee will move the original mark or the finishing line to a new position, and the course will be reconfigured.

12. THE FINISH

The finishing line will be between a staff displaying an orange flag on a starboard end race committee boat and a staff displaying an orange flag on a port end race committee boat.

13. PENALTY SYSTEM

13.1 Boats failing to meet the time limits of SI 14.2 and 14.3 will be scored Did Not Finish Time Limit Expired (DNF TLE).

13.2 The score for DNF TLE will be one more point than the number of boats finishing within the time limit. This changes rule A4.2.

14. TIME LIMITS AND TARGET TIMES

14.1 If no boat has passed Mark 1 within 45 minutes the race will be abandoned.

14.2 Boats failing to finish within 3 hours from the starting signal will be scored DNF TLE without a hearing. This changes rules 35, A4.2 and A5.

14.3 Boats failing to finish within 30 minutes after the first boat sails the course and finishes will be scored DNF TLE without a hearing. This changes rules 35, A4.2 and A5.

15. INTERNATIONAL JURY

An international jury will be constituted in compliance with Appendix N, rules 70.5 and 91(b).



MIAMI SAILING WEEK

PRESENTED BY EFG BANK



16. PROTESTS AND REQUESTS FOR REDRESS

16.1 The time limit for requesting a hearing or requesting redress is one hour after the signal boat docks. The signal boat will post the docking time, finish results, and actions of the race committee including race committee protests as soon as practical after docking.

16.2 Protest forms will be available at the jury desk inside the main lobby at Coral Reef Yacht Club. The protest schedule board will be situated at the jury desk in the main lobby.

17. SCORING

17.1 The Low Point scoring system shall be employed.

17.2 Six races are scheduled. Three completed races are required to constitute a series.

17.3 When three or more races have been completed, a boats series score will be the total of her race scores excluding her worst race.

17.4 Penalties for violations of the Notice of race, Sailing Instructions and the Racing Rules of Sailing which are not a Part 2 or Part 3 infringement are at the discretion of the Protest Committee and may include disqualification.

18. PRIZES

Prizes will be given as follows:

18.1. Daily prizes for the first, second and third place boats in the series,

18.2. A prize for the first place boat in the series for the Masters Division (skippers age 50 through 59 before the start of the first race),

18.3. A prize for the first place boat in the series for the Grand Masters Division (skippers age 60 and above before the start of the first race),

18.4. Competitors in the Master's Division and Grand Master's Division will also compete for series prizes,

18.5. Prizes for the first, second, third, fourth and fifth place boats in the series, and

18.6. The perpetual Bacardi Cup for the first place skipper and the Tito Cup for the first place crew in the series.

19. CHECK IN, SAFETY REGULATIONS, RETIRING

19.1 Boats will sail by the signal boat transom on starboard tack for check in before the warning signal, until acknowledged by the race committee.

19.2 Boats in need of assistance from the race committee will wave an extended arm in the direction of any race committee vessel.

19.3 Boats retiring from racing will notify a race committee boat or if not practical inform the front desk at Coral Reef Yacht Club.

20. SUPPORT AND COACH BOATS

Team leaders, coaches and other support personnel shall stay outside areas where boats are racing from the time of the preparatory signal to start until all boats have finished or



MIAMI SAILING WEEK
PRESENTED BY EFG BANK



retired or the race committee signals a postponement, general recall or abandonment. Interference or producing a race disturbing wake may result in expulsion from CRYC and the US Sailing Center.

21. REPLACEMENT OF CREW OR EQUIPMENT

Substitution of competitors will not be allowed without prior written approval of the jury. Once a crew member has changed, the original crew may not return. There will be no crew exchange on the final day of racing.

22. TRASH DISPOSAL, CLOTHING AND EXTRA SAILS

22.1 Boats shall not put trash in the water. Trash may be placed aboard support and race committee boats.

22.2 The race committee will not accept items of clothing or sails.

23. RADIO COMMUNICATION

Except in an emergency, a boat shall neither make radio transmissions while racing nor receive radio communications. This restriction also applies to mobile telephones and similar devices.

WILLIAM M. SMOAK, MD
PRO
February 23, 2011

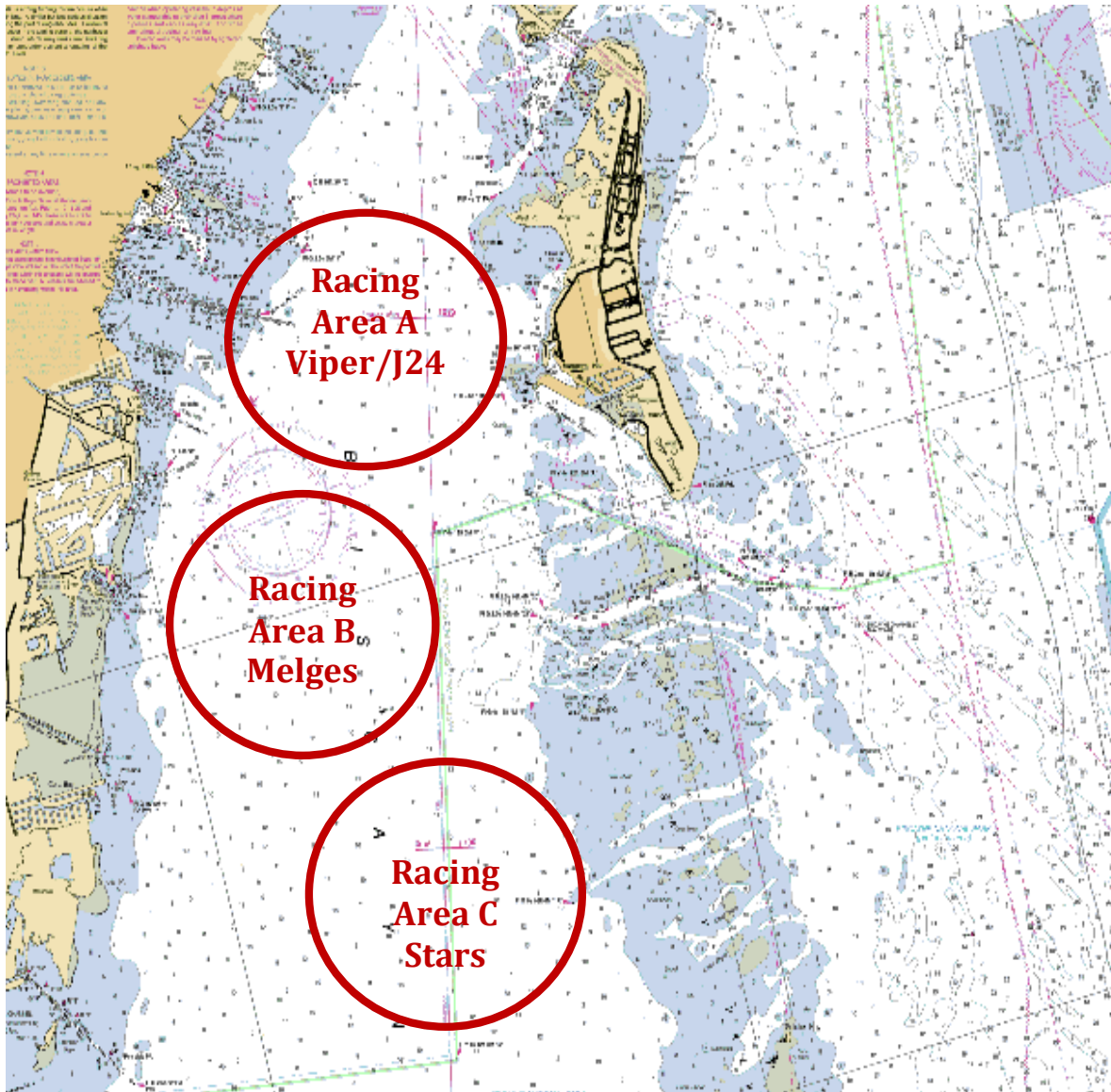


MIAMI SAILING WEEK

PRESENTED BY EFG BANK



APPENDIX I





MIAMI SAILING WEEK

PRESENTED BY EFG BANK



STAR CLASS SAILING INSTRUCTIONS APPENDIX II

US SAILING PRESCRIPTIONS

1. Rule 61.4 --- US SAILING prescribes that no fees shall be charged for protests or requests for redress.
2. Rule 68 – US SAILING prescribes that:
 - a. A boat that retires from a race or accepts a penalty does not, by that action alone, admit liability for damages.
 - b. A protest committee shall find facts and make decisions only in compliance with the rules. No protest committee or US SAILING appeal authority shall adjudicate any claim for damages. Such a claim is subject to the jurisdiction of the courts.
 - c. A basic purpose of the rules is to prevent contact between boats. By participating in an event governed by the rules, a boat agrees that responsibility for damages arising from any breach of the rules shall be based on fault as determined by application of the rules, and that she shall not be governed by the legal doctrine of ‘assumption of risk’ for monetary damages resulting from contact with other boats.
3. Rule 76.1 – US SAILING prescribes that an organizing authority or race committee shall not reject or cancel the entry of a boat or exclude a competitor eligible under the notice of race and sailing instructions for an arbitrary or capricious reason or for reason of race, color, religion, national origin, gender, sexual orientation, or age.
4. Rule 88.2 – US SAILING prescribes that sailing instructions shall not change or delete rules 61.4 or 76.3, Appendix F, or its prescriptions to rules 40, 68 or 76.1. However, for an international event the prescription to rule 40 may be deleted.
5. Rule 76.3 – US SAILING prescribes that a boat whose entry is rejected or cancelled or a competitor who is excluded from a race or series shall be, upon written request, entitled to a hearing conducted by the protest committee under rules 63.2, 63.3, 63.4 and 63.6.